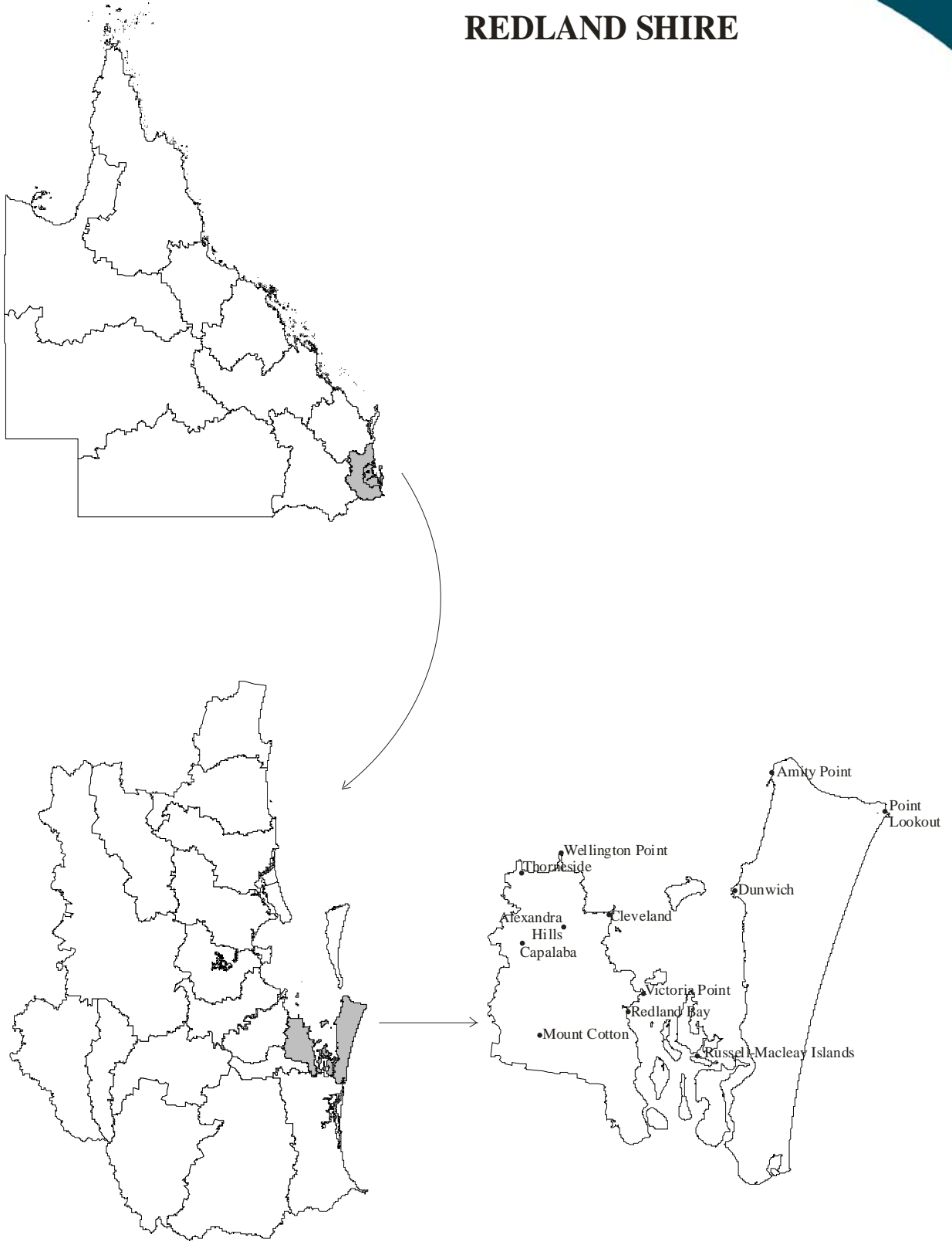


Redland Shire

Economic Snapshot 2005



REDLAND SHIRE



CONTENTS

OVERVIEW OF REDLAND SHIRE	4
POPULATION	5
SUMMARY OF KEY DATA	5
POPULATION OF REDLAND SHIRE	6
PAST, PRESENT AND PROJECTED AGE PROFILES FOR REDLAND SHIRE	8
LABOUR FORCE	12
SUMMARY OF KEY DATA	12
SMALL AREA LABOUR FORCE DATA	13
LABOUR FORCE – 2001 CENSUS	14
EMPLOYMENT BY INDUSTRY – 2001 CENSUS	15
EMPLOYMENT BY INDUSTRY – CHANGES SINCE 1991	16
BUSINESS DEVELOPMENT	17
SUMMARY OF KEY DATA	17
BUILDING INVESTMENT IN REDLAND SHIRE	18
MEAN TAXABLE INCOME	20
TOURIST ACCOMMODATION	21

© Queensland Government 2005

This report is for the exclusive use of the Redland Shire Council, without restriction. All data and information in this report is believed to be accurate and has come from sources believed to be reliable. However, the Office of Economic and Statistical Research, Queensland Treasury, does not guarantee or represent that the data and information is accurate, up to date or complete, and disclaims liability for all claims, losses, damages or costs of whatever nature and howsoever occurring, arising as a result of relying on the data and information, regardless of the form of action, whether in contract, tort (including negligence), breach of statutory duty or otherwise.

For further information contact:
 Economic Development Group, Redland Shire Council,
 PO Box 21, Cleveland, Qld, 4163
 Phone: 61-7-38298532
 Fax: 61-7-38298765
 Email: info@more2redlands.com.au

OVERVIEW OF REDLAND SHIRE

Population

Redland Shire is one of 17 local government areas in the South East Queensland (SEQ) region*. The shire has a total area of 537 square kilometres and an estimated resident population of 127,777 persons as at June 2004.

Redland Shire has a fast growing population. Between June 1999 and June 2004, the average annual growth rate in Redland Shire was 2.9 per cent compared with 2.5 per cent for SEQ and 2.1 per cent for Queensland as a whole.

Labour Force

Labour force data for September quarter 2004 indicate that the unemployment rate for Redland Shire was 3.2 per cent, lower than that for Queensland (5.2 per cent) and lower than that recorded in Redland Shire for the corresponding period last year (4.9 per cent).

At the time of the 2001 Census, *Retail Trade* was the largest employing industry in Redland Shire, with 8,547 (16.5 per cent) of the shire's employed workforce, followed by the *Manufacturing* industry (6,682 persons or 12.9 per cent). These proportions were both higher than those recorded for Queensland.

Business Development

For the 12 months ended December 2004, Redland Shire accounted for 2.9 per cent (\$361.4 million) of the value of Queensland's total buildings approved. While the value of residential building approvals remained steady in 2004, non-residential approvals grew substantially to \$121.4 million in value.

Takings from tourist accommodation for Redland Shire for the year ended 31 December 2004 were \$2.4 million, accounting for 0.2 per cent of Queensland's takings from accommodation during the year.

* SEQ includes the following local government areas: Beaudesert (Shire), Boonah (S), Brisbane (City), Caboolture (S), Caloundra (C), Esk (S), Gatton (S), Gold Coast (C), Ipswich (C), Kilcoy (S), Laidley (S), Logan (C), Maroochy (S), Noosa (S), Pine Rivers (S), Redcliffe (C) and Redland (S).

POPULATION

SUMMARY OF KEY DATA

As at 30 June 2004, Redland Shire had an estimated resident population of 127,777 persons. Between June 1999 and June 2004, the average annual growth rate in Redland Shire was 2.9 per cent compared with 2.5 per cent for SEQ and 2.1 per cent for Queensland as a whole.

Census data and current estimated resident population data show that the population of Redland Shire has increased from 5,211 persons in 1947 to 127,777 persons in 2004. Most growth has occurred between the early 1970s and the present with an increase of ten times that of the previous years to 1971.

The resident population of Redland Shire is projected to increase at an average annual rate of 1.6 per cent during the period from 2001 to 2026. The resident population is projected to increase to 176,025 persons by 2026.

POPULATION OF REDLAND SHIRE

Recent trends

As at 30 June 2004, the estimated resident population of Redland Shire was 127,777 persons, representing 3.3 per cent of the total Queensland population (Table 1). The population increased by 17,262 persons in the five years to 30 June 2004.

The population of Redland Shire increased by 2.4 per cent between June 2003 and June 2004, slightly less than the average annual increase between June 1999 and June 2004 of 2.9 per cent. The five yearly rate of growth was higher than that experienced in the SEQ region and in Queensland as a whole.

Of the 17 local government areas in SEQ, Redland Shire was ranked seventh in terms of growth between June 1999 and June 2004 and eighth in terms of growth between June 2003 and June 2004.

Table 1. Estimated resident population by local government area, South East Queensland, 30 June 1999, 2003, 2004

Local government area	Area km ²	Estimated resident population			Average annual change	
		1998	2003r	2004p	1999-04p	2003-04p
		— number —			— per cent —	
Beaudesert (S)	2,854	51,270	57,574	59,393	3.0	3.2
Boonah (S)	1,921	8,318	8,545	8,567	0.6	0.3
Brisbane (C)	1,327	864,273	939,442	957,010	2.1	1.9
Caboolture (S)	1,225	110,493	121,271	126,729	2.8	4.5
Caloundra (C)	1,094	71,942	82,998	86,468	3.7	4.2
Esk (S)	3,934	14,484	15,067	15,206	1.0	0.9
Gatton (S)	1,572	15,328	16,166	16,288	1.2	0.8
Gold Coast (C)	1,407	394,675	455,986	469,214	3.5	2.9
Ipswich (C)	1,203	124,552	131,896	135,579	1.7	2.8
Kilcoy (S)	1,445	3,266	3,423	3,467	1.2	1.3
Laidley (S)	701	12,928	13,200	13,351	0.6	1.1
Logan (C)	251	165,195	171,482	173,331	1.0	1.1
Maroochy (S)	1,163	119,494	136,617	141,069	3.4	3.3
Noosa (S)	869	41,110	46,515	47,606	3.0	2.3
Pine Rivers (S)	750	115,456	133,931	139,228	3.8	4.0
Redcliffe (C)	38	49,106	51,781	52,303	1.3	1.0
Redland (S)	537	110,515	124,824	127,777	2.9	2.4
South East Qld	22,291	2,272,405	2,510,718	2,572,586	2.5	2.5
Queensland	1,734,157	3,501,421	3,801,039	3,882,037	2.1	2.1
Redland Shire as a percentage of Qld	0.03	3.2	3.3	3.3

.. = not applicable
 S = Shire C = City
 r = revised estimates
 p = preliminary estimates

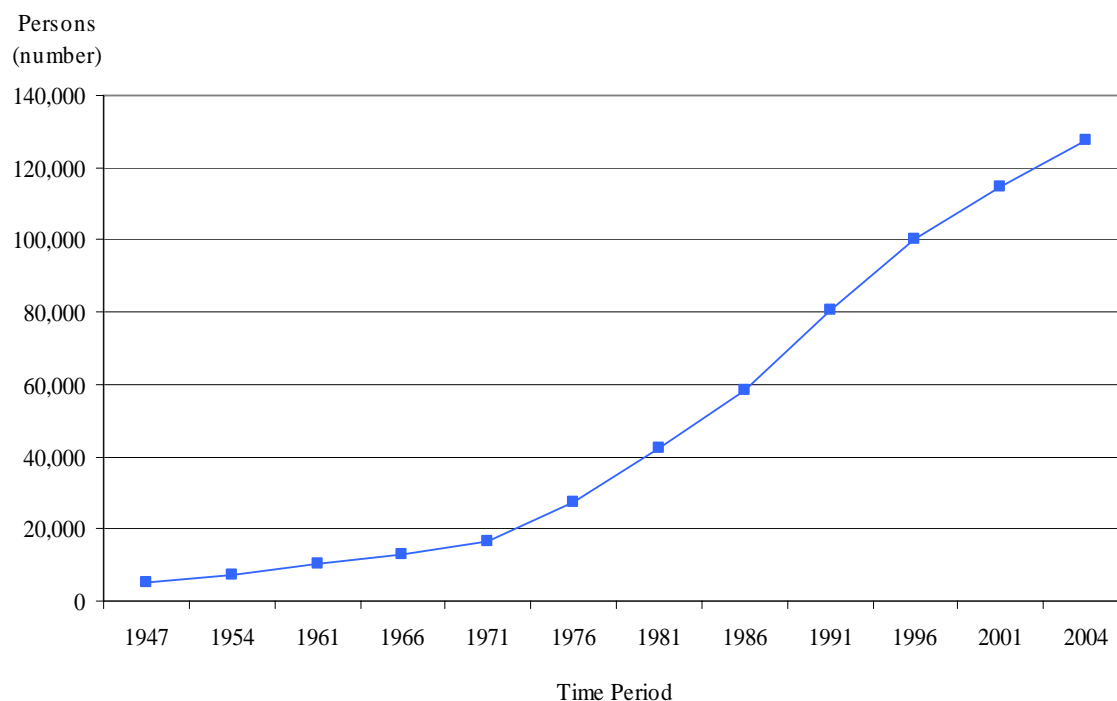
Source: Regional Population Growth, Australia and New Zealand, 2003-04 (ABS Cat. no. 3218.0)

Population change in Redland Shire since 1947

Census data and current estimated resident population data show that the population of Redland Shire has increased greatly since the early 1970s (Figure 1). Between 1947 and 1971 the population only increased by 11,461 persons while between 1971 and 2004 the population increased by 111,105 persons.

The population increased sevenfold between 1971 and 2001 from 16,672 persons to 114,601 persons and average annual growth of around 3 per cent each year since 2001 has ensured continued population increase in the shire.

Figure 1. Population (a), Redland Shire, 1947 to 2004



(a) Based on actual location census counts of the population.

Source: Australian Bureau of Statistics, Censuses of Population and Housing, 1947 to 2001, Regional Population Growth, Australia and New Zealand, 2003-04 (ABS Cat. no. 3218.0).

Future trends

The latest Department of Local Government and Planning medium series population projections indicate that the resident population of Redland Shire will increase at an average annual rate of 1.6 per cent during the period from 2001 to 2026. This is a lower rate of increase than that recorded between June 1999 and June 2004 (2.9 per cent) but is greater than the projected average annual growth rate for Queensland as a whole to 2026 (1.5 per cent). The resident population of Redland Shire is projected to increase from 117,252 persons in 2001 to 176,025 persons by 2026.

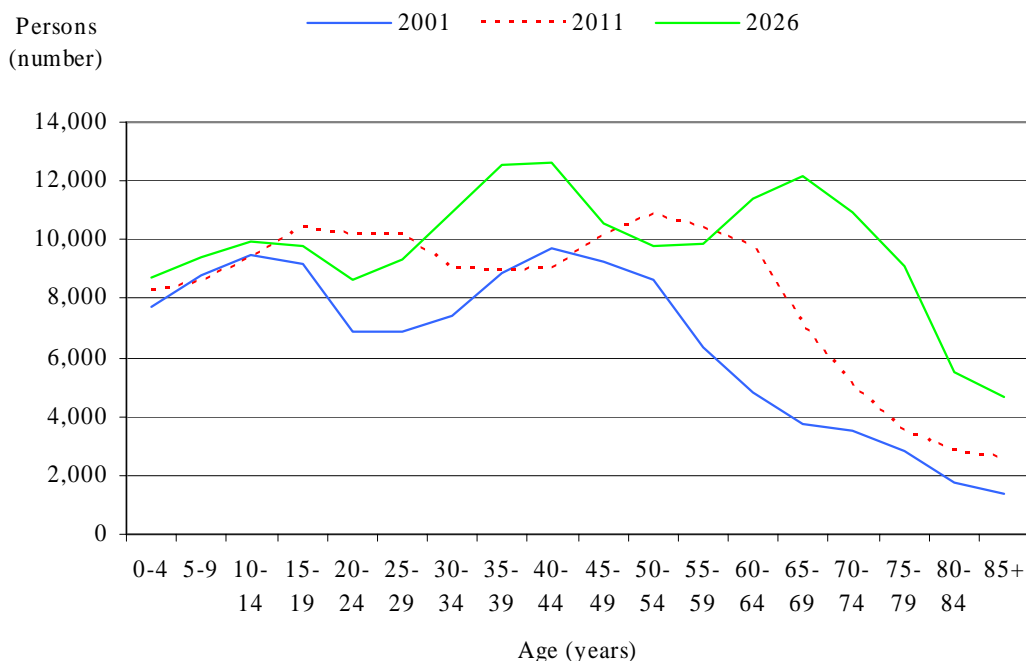
PAST, PRESENT AND PROJECTED AGE PROFILES FOR REDLAND SHIRE

Over the long term, the resident population in Redland Shire is projected to increase overall in each age group by 2026 (Figure 2). Three five year age groups including 5 to 9, 10 to 14 and 40 to 44 years are projected to decline slightly by 2011 and then increase by 2026.

There are two age cohorts in Redland Shire which are projected to dominate the largest proportion of population increase in Redland Shire over the period to 2026. The age cohorts of 0 to 19 years and 35 to 54 years in 2001 represented over 60 per cent of the total resident population. As these cohorts get older, they represent the most significant increases in population.

The 0 to 19 year age cohort in 2001 is projected to represent the largest cohort in 2026 as persons aged 25 to 44 years. The age cohort of 35 to 54 in 2001 is projected to provide the next largest age cohort in 2026 as persons aged 60 to 79 years. As a result of the size of these cohorts, the population aged 25 to 44 years is projected to increase from 32,879 persons in 2001 to 45,379 persons in 2026. Persons aged 60 years and over are projected to increase by almost 200 per cent from 17,995 persons in 2001 to 53,804 persons in 2026.

Figure 2. Estimated and projected resident population by age group, Redland Shire, 2001 to 2026 (a)



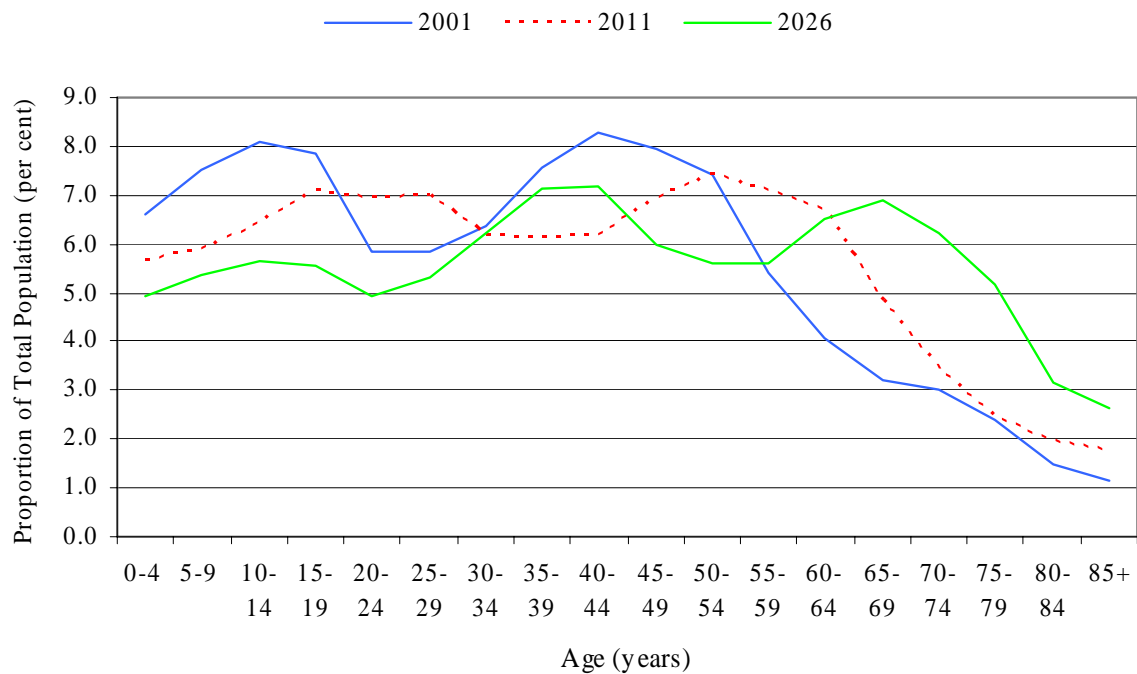
(a) Based on the medium projection series.

Source: Department of Local Government and Planning, *Queensland's Future Population*, 2003 edition.

Redland Shire, like most of Queensland, has an ageing population. The proportion of all age groups less than 60 years is projected to decline from 2001 to 2026 (Figure 3). The proportion of persons aged 65 years and over is expected to increase from 11.3 per cent in 2001 to 24.1 per cent in 2026.

Despite a large projected increase over the period to 2026 in the 65 years and over age groups, persons aged 35 to 39 and 40 to 44 years are expected to represent the highest proportion of persons in Redland Shire in 2026 with 7.1 per cent and 7.2 per cent of total persons respectively.

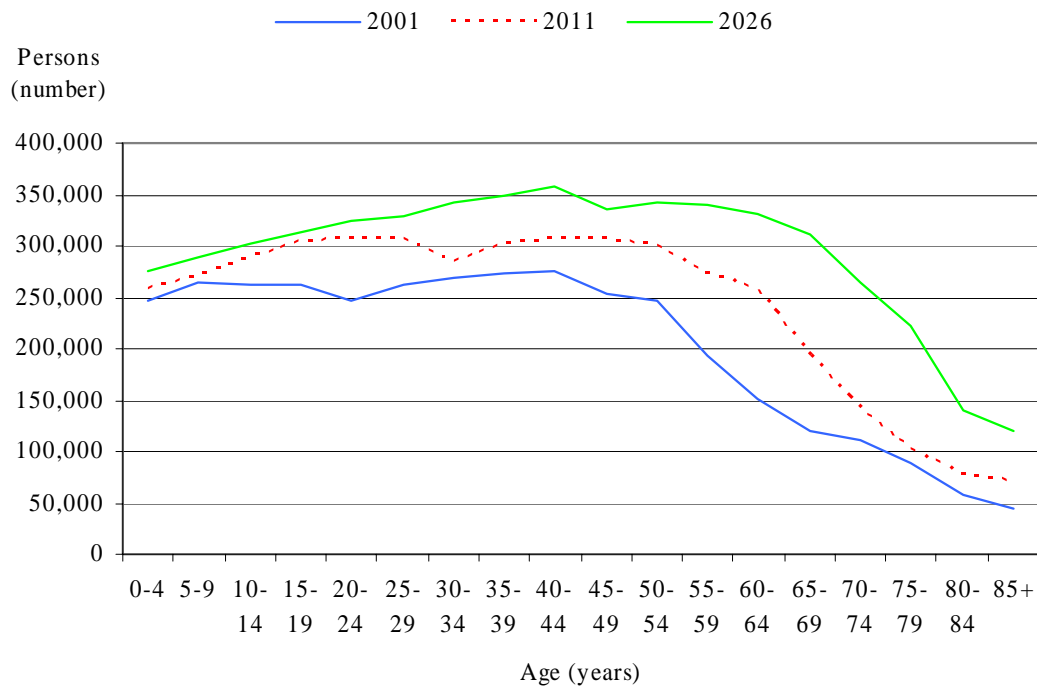
Figure 3. Estimated and projected resident population by proportion in each age group, Redland Shire, 2001 to 2026 (a)



(a) Based on the medium projection series.
Source: Department of Local Government and Planning, *Queensland's Future Population*, 2003 edition.

The resident population of Queensland is projected to increase between 2001 and 2026 across all age groups (Figure 4). The greatest increase over this period is expected to occur in the ages between 55 and 79 years, influencing the overall ageing trend of the population. Each five year age group in this cohort is projected to increase by more than 130,000 persons between 2001 and 2026, compared with growth of less than 100,000 persons over the same period in all other five year age groups.

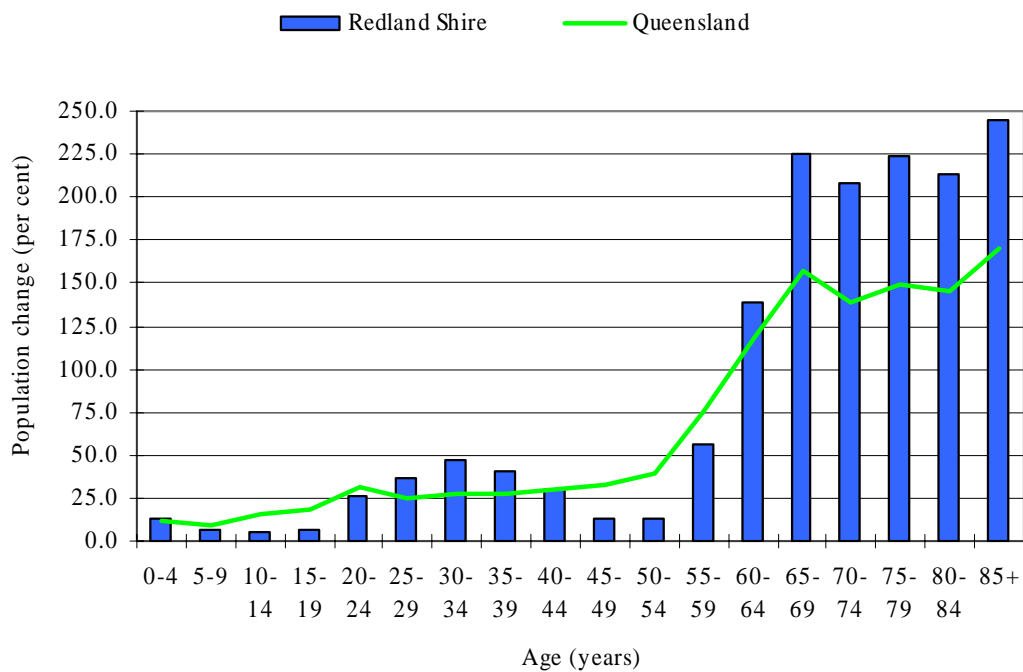
Figure 4. Estimated and projected resident population by age group, Queensland, 2001 to 2026 (a)



(a) Based on the medium projection series.
 Source: Department of Local Government and Planning, *Queensland's Future Population*, 2003 edition.

While the resident populations of Redland Shire and Queensland are both projected to increase between 2001 and 2026, the highest rate of increase for both regions is expected to occur in the 60 years and over age groups. Redland Shire has larger percentage increases than Queensland projected in the five year age groups between 25 and 39, and 60 years and over (Figure 5).

Figure 5. Projected percentage change in resident population by age group, Redland Shire and Queensland, 2001 to 2026 (a)



(a) Based on the medium projection series.

Source: Department of Local Government and Planning, *Queensland's Future Population*, 2003 edition.

LABOUR FORCE

SUMMARY OF KEY DATA

Labour force data for September quarter 2004 indicate that the unemployment rate for Redland Shire was 3.2 per cent, lower than that for Queensland (5.2 per cent) and lower than that recorded in Redland Shire for the corresponding period last year (4.9 per cent).

At the time of the 2001 Census, *Retail Trade* was the largest employing industry in Redland Shire, with 16.5 per cent (8,547 persons) of the shire's employed labour force, followed by *Manufacturing* with 12.9 per cent (6,682 persons). These proportions were both higher than those recorded for Queensland.

In Redland Shire, the only industry to record a decline in the number of persons employed between 1991 and 2001 was the *Agriculture, Forestry and Fishing* industry. The number of employed persons fell from 829 to 796.

Total employment in Redland Shire increased by 18,026 persons over the ten-year period from 1991 to 2001. There were 3,390 jobs created in the *Retail Trade* industry, 2,597 jobs created in the *Property and Business Services* industry, and 2,441 jobs created in the *Health and Community Services* industry.

SMALL AREA LABOUR FORCE DATA

Current Labour Force

Of Queensland's total labour force, 3.3 per cent (65,523 persons) were located in Redland Shire (Table 2). The unemployment rate in Redland Shire in September quarter 2004 was 3.2 per cent. This was lower than that recorded for Queensland (5.2 per cent) and lower than that recorded in Redland Shire for the corresponding period last year (4.9 per cent).

Table 2. Labour force status (a), Redland Shire and Queensland, September quarter 2004

	Redland Shire	Queensland	Redland Shire as a percentage of Queensland
Unemployment (number)	2,091	103,599	2.0
Unemployment rate (per cent)	3.2	5.2	..
Labour force (number)	65,523	2,008,716	3.3

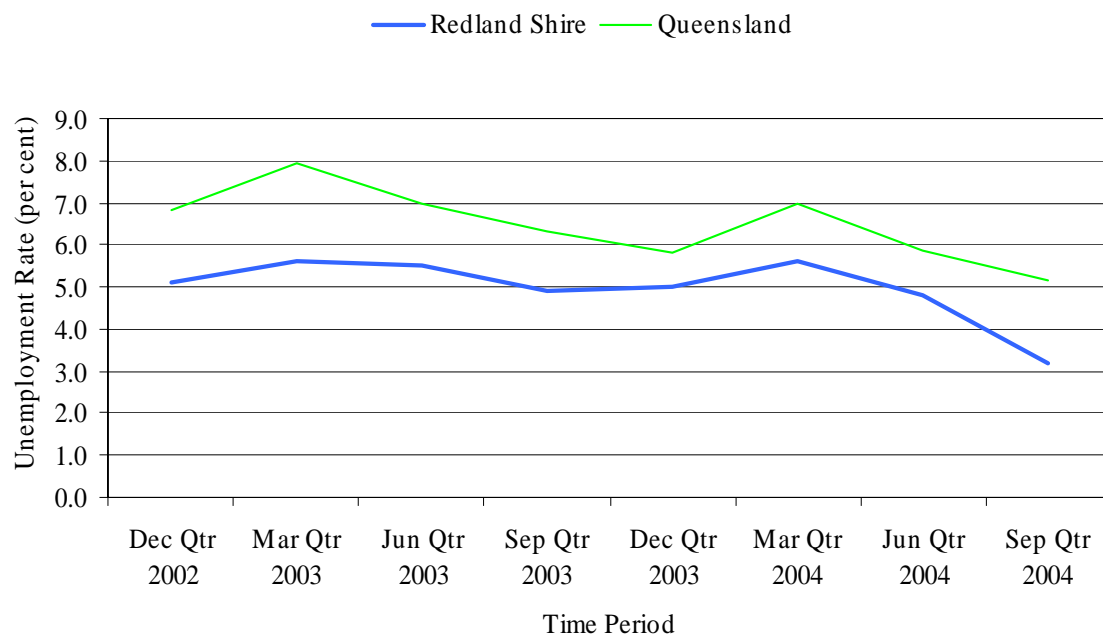
(a) Original unadjusted series.

Source: Department of Employment and Workplace Relations, Small Area Labour Markets

Unemployment Rate Trend

The unemployment rate has continued to decline in both Redland Shire and Queensland overall over the past two years (Figure 6). The latest unemployment rate is at a historically low level for Redland Shire, following the steady record of low unemployment rates for the previous seven quarters.

Figure 6. Unemployment rate, Redland Shire and Queensland, December quarter 2002 to September quarter 2004



Source: Department of Employment and Workplace Relations, Small Area Labour Markets

Office of Economic and Statistical Research, Redland Shire, Economic Snapshot, April 2005

LABOUR FORCE – 2001 CENSUS

The unemployment rate for Redland Shire at the time of the 2001 Census was 7.0 per cent, lower than that for Queensland as a whole (8.2 per cent) (Table 3). Within SEQ, only Pine Rivers Shire (5.8 per cent) and Boonah Shire (4.2 per cent) had lower unemployment rates, while Brisbane City, Gatton Shire and Beaudesert Shire recorded the same unemployment rate.

The participation rate for the shire was 65.0 per cent, a rate that was 1.9 percentage points higher than that for Queensland (63.1 per cent). Within SEQ, only Pine Rivers Shire (71.9 per cent), Beaudesert Shire (66.9 per cent), Logan City (66.9 per cent) and Brisbane City (66.0 per cent) had higher participation rates.

Table 3. Labour force status (a) by local government area, South East Queensland, 2001

Local government area	Employed			Unemployed - persons -	Labour force	Not in Labour force	Unemployment rate per cent	Participation rate (c) per cent
	Full-time	Part-time	Total (b)					
Beaudesert (S)	15,481	7,437	23,805	1,794	25,599	12,669	7.0	66.9
Boonah (S)	2,261	1,033	3,397	149	3,546	2,473	4.2	58.9
Brisbane (C)	276,259	135,644	422,883	32,066	454,949	234,821	7.0	66.0
Caboolture (S)	25,380	14,526	41,434	5,065	46,499	35,404	10.9	56.8
Caloundra (C)	15,188	10,842	26,909	3,469	30,378	27,166	11.4	52.8
Esk (S)	3,329	1,621	5,138	496	5,634	4,633	8.8	54.9
Gatton (S)	4,058	2,095	6,376	481	6,857	4,062	7.0	62.8
Gold Coast (C)	108,778	64,644	179,122	19,269	198,391	126,363	9.7	61.1
Ipswich (C)	33,561	15,953	51,141	4,715	55,856	33,516	8.4	62.5
Kilcoy (S)	767	434	1,243	104	1,347	1,008	7.7	57.2
Laidley (S)	2,898	1,436	4,516	514	5,030	3,963	10.2	55.9
Logan (C)	46,633	22,260	71,223	8,006	79,229	39,243	10.1	66.9
Maroochy (S)	28,266	19,998	49,767	6,290	56,057	40,847	11.2	57.8
Noosa (S)	9,425	7,406	17,351	2,176	19,527	15,407	11.1	55.9
Pine Rivers (S)	38,028	19,188	58,844	3,618	62,462	24,459	5.8	71.9
Redcliffe (C)	11,302	6,327	18,248	2,241	20,489	17,937	10.9	53.3
Redland (S)	32,911	17,351	51,807	3,911	55,718	30,045	7.0	65.0
Queensland	1,002,596	518,158	1,568,864	140,748	1,709,612	1,000,121	8.2	63.1
Redland Shire as a percentage of Queensland	3.3	3.3	3.3	2.8	3.3	3.0

S = Shire C = City

(a) Persons aged 15 years and over.

(b) Includes not stated.

(c) Only those persons who stated their labour force status were included in the calculation. Excludes overseas visitors.

Source: Australian Bureau of Statistics, 2001 Census of Population and Housing, unpublished data.

EMPLOYMENT BY INDUSTRY – 2001 CENSUS

At the time of the 2001 Census, *Retail Trade* was the largest employing industry in Redland Shire with 8,547 (16.5 per cent) of the region's employed labour force, followed by *Manufacturing* (6,682 or 12.9 per cent) (Table 4). This compared with 15.3 per cent and 10.7 per cent respectively for the State as a whole for these industries.

The highest degree of specialisation in the shire occurred in the following industries: *Wholesale Trade, Communication Services, Construction, Manufacturing, Finance and Insurance, Personal and Other Services, Transport and Storage* and *Retail Trade*.

Table 4. Employment by industry (a), Redland Shire and Queensland, 2001

Industry	Redland Shire		Queensland		Specialisation ratio (a)
	number	per cent	number	per cent	
Agriculture, Forestry and Fishing	796	1.5	76,532	4.9	0.3
Mining	344	0.7	19,286	1.2	0.5
Manufacturing	6,682	12.9	167,380	10.7	1.2
Electricity, Gas and Water Supply	346	0.7	12,359	0.8	0.8
Construction	4,548	8.8	111,209	7.1	1.2
Wholesale Trade	3,477	6.7	79,718	5.1	1.3
Retail Trade	8,547	16.5	239,615	15.3	1.1
Accommodation, Cafes and Restaurants	1,891	3.7	88,381	5.6	0.6
Transport and Storage	2,844	5.5	77,587	4.9	1.1
Communication Services	1,001	1.9	23,016	1.5	1.3
Finance and Insurance	1,724	3.3	44,562	2.8	1.2
Property and Business Services	5,268	10.2	153,864	9.8	1.0
Government Administration and Defence	1,959	3.8	75,048	4.8	0.8
Education	3,347	6.5	118,896	7.6	0.9
Health and Community Services	4,825	9.3	151,029	9.6	1.0
Cultural and Recreational Services	937	1.8	37,341	2.4	0.8
Personal and Other Services	2,180	4.2	57,662	3.7	1.1
Non-classifiable economic units	273	0.5	7,452	0.5	1.1
Not stated	819	1.6	27,927	1.8	0.9
Total	51,808	100.0	1,568,864	100.0	1.0

(a) Ratio of per cent for the Redland Shire to per cent for Queensland.

Source: Australian Bureau of Statistics, 2001 Census of Population and Housing, unpublished data.

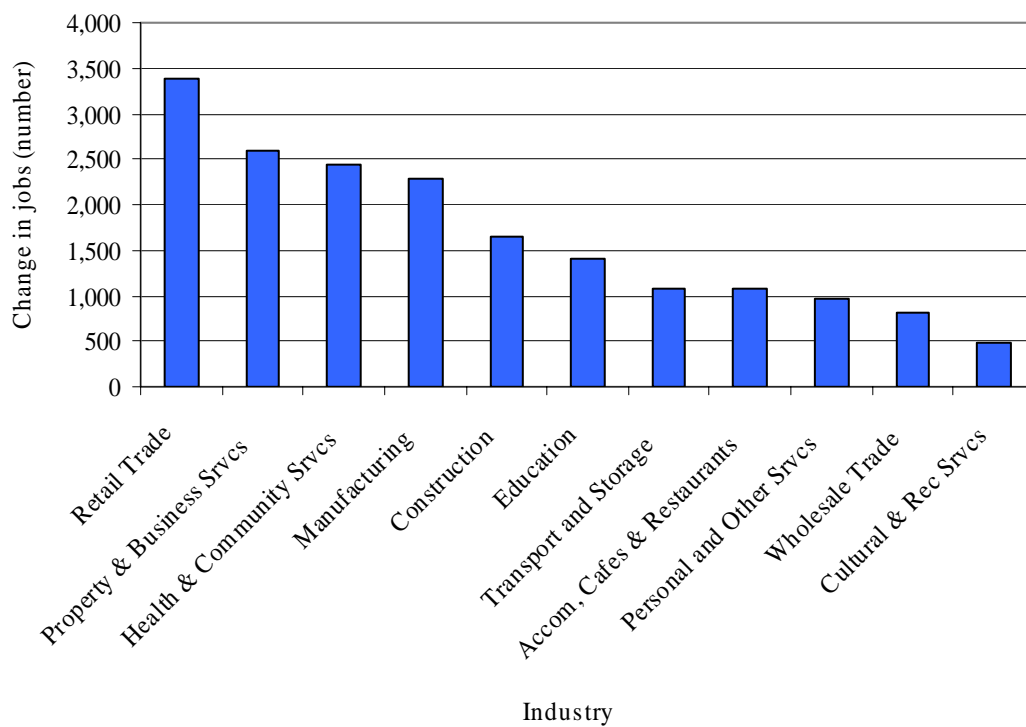
It should be noted that of those employed persons in 2001, not all worked within Redland Shire. Labour demand within Redland Shire indicates that 20,111 persons lived and worked within Redland Shire while a further 6,090 lived outside Redland Shire while working in the shire.

Demand for labour within Redland Shire reveals that the *Retail Trade* industry was the largest employer (5,690 persons or 21.7 per cent of total demand for labour), followed by *Health and Community Services* which employed 2,839 persons or 10.8 per cent of total demand for labour.

EMPLOYMENT BY INDUSTRY – CHANGES SINCE 1991

Total employment in Redland Shire increased by 18,026 persons over the ten-year period from 1991 to 2001. There were 3,390 jobs created in the *Retail Trade* industry, 2,597 jobs created in the *Property and Business Services* industry, 2,441 jobs created in the *Health and Community Services* industry, and 2,280 jobs created in the *Manufacturing* industry (Figure 7).

Figure 7. Change in number of jobs by selected industry, Redland Shire, 1991 to 2001



Source: Australian Bureau of Statistics, 1991 and 2001 Censuses of Population and Housing, unpublished data.

BUSINESS DEVELOPMENT

SUMMARY OF KEY DATA

Based on data for the year ended 31 December 2004, there were 1,085 residential dwelling units approved in Redland Shire with a total value of \$240.0 million. Non-residential buildings approved had a total value of \$121.4 million for this period. The steady record of residential building approvals, combined with particularly strong growth in the value of non-residential building approvals in 2004, has increased the overall growth in the value of building approvals in the shire.

Takings from tourist accommodation for Redland Shire for the year ended 31 December 2004 were \$2.4 million, accounting for 0.2 per cent of Queensland's takings from accommodation during this year.

BUILDING INVESTMENT IN REDLAND SHIRE

Based on data for the year ended 31 December 2004, there were 1,085 residential dwelling units approved in Redland Shire with a total value of \$240.0 million (Table 5). These approvals accounted for 2.7 per cent of the number (40,822) and 2.7 per cent of the value (\$8,925.1 million) of Queensland's total residential dwelling approvals.

The total value of non-residential buildings approved in the shire for the year ended 31 December 2004 was \$121.4 million, 3.4 per cent of the overall total for Queensland. Of the 17 local government areas in SEQ, only Brisbane City, Gold Coast City and Logan City accounted for a higher value of non-residential building approvals.

Table 5. Building approvals (a), South East Queensland, year ended 31 December 2004

Local government area	Residential dwelling units approved	Value of residential buildings	Value of non-residential buildings approved	Total value of buildings approved
	number		\$'000	
Beaudesert (S)	526	106,412	9,126	115,538
Boonah (S)	56	9,588	2,259	11,847
Brisbane (C)	8,639	2,148,704	1,371,496	3,520,200
Caboolture (S)	1,978	336,936	65,083	402,019
Caloundra (C)	1,436	331,998	83,005	415,003
Esk (S)	139	22,872	1292	24,164
Gatton (S)	127	22,128	8,160	30,288
Gold Coast (C)	6,877	1,789,274	695,695	2,484,969
Ipswich (C)	2,130	358,928	83,812	442,740
Kilcoy (S)	37	6,247	878	7,125
Laidley (S)	276	38,919	770	39,689
Logan (C)	604	107,419	129,975	237,394
Maroochy (S)	2,002	503,514	85,648	589,162
Noosa (S)	479	165,820	35,118	200,938
Pine Rivers (S)	1,792	353,442	81,860	435,302
Redcliffe (C)	462	106,002	21,511	127,513
Redland (S)	1,085	239,978	121,390	361,368
Queensland	40,822	8,925,137	3,587,185	12,512,322
Redland Shire as a percentage of Qld	2.7	2.7	3.4	2.9

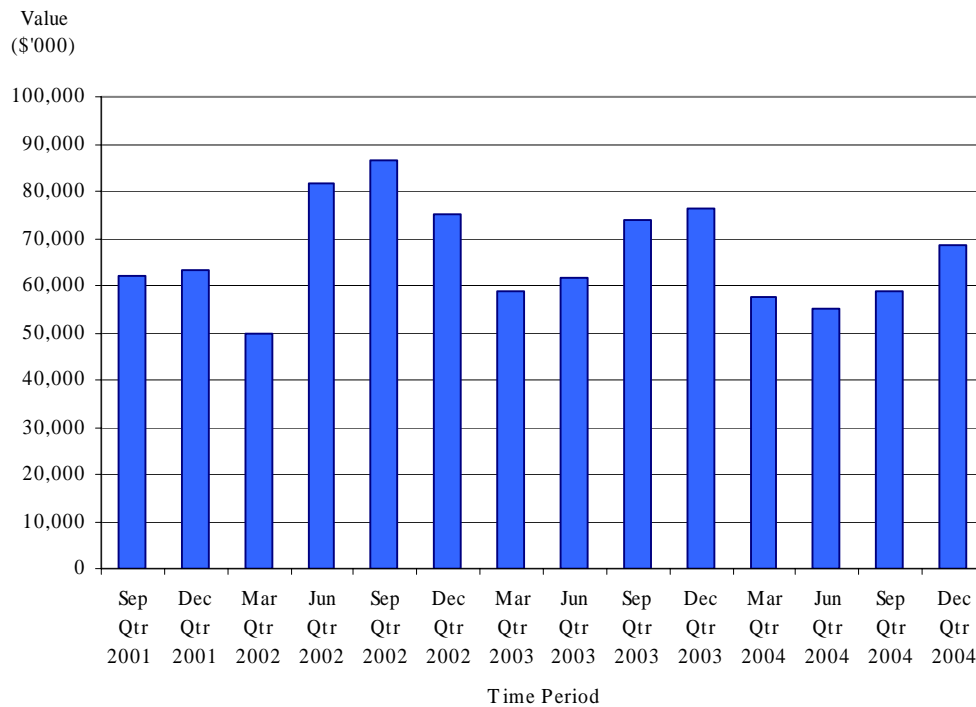
S = Shire C = City

(a) Includes alterations, additions and conversions.

Source: Australian Bureau of Statistics, *Building Approvals, Queensland* (Cat. no. 8731.0)

The value of residential building approvals in Redland Shire remained relatively steady in the year ended 31 December 2004, following the strong growth recorded in 2002 and 2003 (Figure 8). The steady record of residential building approvals, combined with particularly strong growth in the value of non-residential building approvals in 2004, has increased the overall growth in the value of building approvals in the shire.

Figure 8. Value of residential building approvals, Redland Shire, September quarter 2001 to December quarter 2004



Source: Australian Bureau of Statistics, *Building Approvals, Queensland* (Cat. no. 8731.0).

MEAN TAXABLE INCOME

Statistics from the Australian Taxation Office show that the mean taxable income of taxpayers in Redland Shire for the 2001-02 financial year was \$37,019 (Table 6). This figure was \$1,049 more than the equivalent Queensland figure (\$35,970).

Table 6. Mean taxable income of taxpayers, Redland Shire and Queensland, 2001-02

	Redland Shire	Queensland
Taxable persons	53,373	1,554,247
Taxable income (\$'000)	1,975,844	55,906,403
Mean taxable income (\$)	37,019	35,970

Source: Australian Taxation Office (unpublished data).

TOURIST ACCOMMODATION

Redland Shire forms part of the Brisbane Tourism Region in Queensland. Table 7 shows that in December quarter 2004, the shire had 5 (0.5 per cent) of Queensland's tourism establishments and 127 (0.2 per cent) of Queensland's hotel, motel, resort, guest house and serviced apartment rooms.

Takings from tourist accommodation for Redland Shire for the year ended 31 December 2004 were \$2.4 million, accounting for 0.2 per cent of Queensland's takings from accommodation during the year.

Table 7. Tourist accommodation by selected local government areas, Brisbane Tourism Region, December 2004

Tourism region/ local government area	December quarter 2004			Takings from accommodation (Yr to Dec 2004) \$'000
	Establishments — number —	Guest rooms	Average room occupancy rate per cent	
Brisbane Tourism Region				
Brisbane (C)	132	9,179	77.4	303,057
Caboolture (S)	7	191	57.2	3,119
Ipswich (C)	5	139	57.2	3,124
Redland (S)	5	127	60.4	2,374
Balance (a)	11	275	51.9	4,295
Queensland	1,010	55,473	67.3	1,576,735
Redland Shire as a percentage of Queensland	0.5	0.2	..	0.2

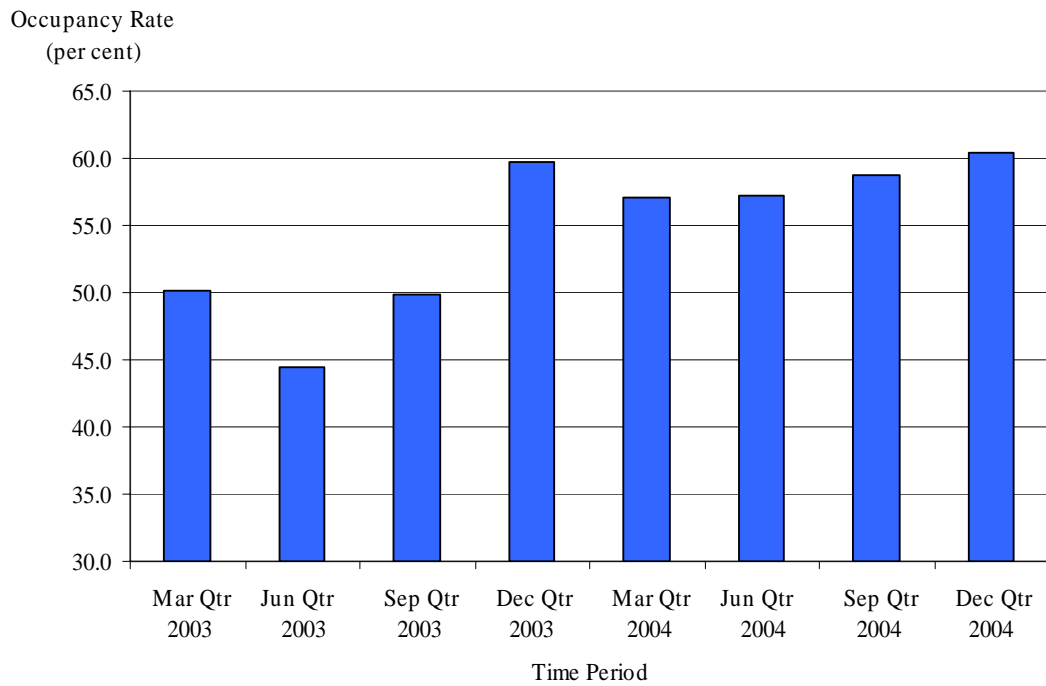
C = City S = Shire

(a) Balance includes Logan City, Gatton Shire, Pine Rivers Shire and Redcliffe City.

Source: Australian Bureau of Statistics, *Tourist Accommodation, Queensland* (Cat. no. 8635.3).

The average occupancy rate for guest rooms in Redland Shire was 60.4 per cent for December quarter 2004, 6.9 percentage points below the rate for Queensland (67.3 per cent). It should be recognised, however, that room occupancy rates vary considerably depending on the time of the year (Figure 9).

Figure 9. Average room occupancy rates, Redland Shire, March quarter 2003 to December quarter 2004



Source: Australian Bureau of Statistics, *Tourist Accommodation, Queensland* (Cat. no. 8635.3).