



# Redland Shire Economic Snapshot



# 2004

Getting Down to Business



# REDLAND SHIRE



Prepared for Redland Shire Council by the Queensland Office of Economic and Statistical Research (web: [www.oesr.qld.gov.au](http://www.oesr.qld.gov.au)) - April 2004.



## TABLE OF CONTENTS

OVERVIEW OF REDLAND SHIRE .....	4
<b>POPULATION</b> .....	5
SUMMARY OF KEY DATA .....	5
POPULATION OF REDLAND SHIRE .....	5
PAST, PRESENT AND PROJECTED AGE PROFILES FOR REDLAND SHIRE .....	8
<b>LABOUR FORCE</b> .....	11
SUMMARY OF KEY DATA .....	11
SMALL AREA LABOUR FORCE DATA .....	12
LABOUR FORCE – 2001 CENSUS .....	13
EMPLOYMENT BY INDUSTRY – 2001 CENSUS .....	14
EMPLOYMENT BY INDUSTRY – CHANGES SINCE 1991 .....	15
<b>BUSINESS DEVELOPMENT</b> .....	16
SUMMARY OF KEY DATA .....	16
AGRICULTURAL PRODUCTION.....	17
BUILDING INVESTMENT IN REDLAND SHIRE .....	18
MEAN TAXABLE INCOME.....	20
TOURIST ACCOMMODATION .....	21

\*\*\*\*\*

For further information contact:

Economic Development Group  
Redland Shire Council  
PO Box 21  
Cleveland QLD 4163

Phone: 61-7-38298532  
Fax: 61-7-38298803  
Email: [business@redland.qld.gov.au](mailto:business@redland.qld.gov.au)  
Web: [www.redland.qld.gov.au/business.cfm](http://www.redland.qld.gov.au/business.cfm)



## OVERVIEW OF REDLAND SHIRE

### Population

Redland Shire is one of 17 local government areas in the South East Queensland region. The shire has a total area of 537 square kilometres and an estimated resident population of 124,683 persons as at June 2003.

Redland Shire has a fast growing population. Between June 1998 and June 2003, the annual average growth rate in Redland Shire was 3.0 per cent compared with 2.4 per cent in South East Queensland and 1.9 per cent in Queensland as a whole.

### Economic indicators

For the 12 months ended December 2003, Redland Shire accounted for 3.0 per cent (\$321.3 million) of the value of Queensland's total **buildings** approved. During the 12 months ending December 2003, Redland Shire was ranked seventh out of the 17 local government areas in South East Queensland in terms of the value of dwelling units approved in new residential buildings (\$270.7 million).

At the 2001 Census of Population and Housing, the **labour force** participation rate for Redland Shire was 65.0 per cent, compared with the Queensland rate of 63.1 per cent. The unemployment rate for December quarter 2003 in Redland Shire was 5.0 per cent. This compared with 5.8 per cent in Queensland.

At the 2001 Census, *Retail Trade* was the largest **industry** in Redland Shire, with 8,547 (16.5 per cent) of the shire's employed workforce, followed by the *Manufacturing* industry (6,682 persons or 12.9 per cent). Of those employed in the *Retail Trade* industry, 4,506 persons live and work within the Redland Shire, while a further 1,184 persons live outside Redland Shire and work locally. Similarly in the *Manufacturing* industry, 1,895 persons live and work within the Redland Shire, while a further 712 persons live outside Redland Shire and work locally.

The total gross value of **agricultural production** in Redland Shire for the year ended March 2001 was \$60.7 million, representing 0.8 per cent of the Queensland total.



# POPULATION

## SUMMARY OF KEY DATA

As at 30 June 2003, Redland Shire had an estimated resident population of 124,683 persons. Between June 1998 and June 2003, the annual average growth rate in Redland Shire was 3.0 per cent compared with 2.4 per cent in South East Queensland and 1.9 per cent in Queensland as a whole.

Census data show that the population of Redland Shire has increased from 5,211 persons in 1947 to 114,601 persons in 2001. Most growth has occurred since the early 1970s. Between 1947 and 1971 the population only increased by 11,461 persons, while between 1971 and 2001 the population increased by 97,929 persons.

The population of Redland Shire is projected to increase at an average annual rate of 2.0 per cent during the twenty-year period to 2021. The estimated resident population is projected to increase to 176,495 persons by 2021.

## POPULATION OF REDLAND SHIRE

### Recent trends

As at 30 June 2003, the estimated resident population of Redland Shire was 124,683 persons, representing 3.3 per cent of the total Queensland population (Table 1). The population increased by 16,986 persons in the five years to 30 June 2003.

The population of Redland Shire increased by 3.5 per cent between June 2002 and June 2003, more than the average annual increase between June 1998 and June 2003 of 3.0 per cent. These rates of growth were higher than those experienced in the South East Queensland (SEQ) region and in Queensland as a whole. Of the 17 local government areas in SEQ, Redland Shire was ranked sixth in terms of growth between June 1998 and June 2003. Only Gold Coast City (3.6 per cent), Pine Rivers Shire (3.6 per cent), Caloundra City (3.5 per cent), Maroochy Shire (3.3 per cent), and Noosa Shire (3.3 per cent) had higher average annual growth rates during this period.



**Table 1. Estimated resident population by local government area,  
South East Queensland, 30 June 1998, 2002, 2003**

Local government area	Area km <sup>2</sup>	Estimated resident population			Average annual change	
		1998	2002	2003p	2002-03p	1998-03
		— number —			— per cent —	
Beaudesert (S)	2,854	50,127	55,796	57,509	3.1	2.8
Boonah (S)	1,921	8,290	8,412	8,535	1.5	0.6
Brisbane (C)	1,327	850,543	917,576	938,384	2.3	2.0
Caboolture (S)	1,229	107,657	117,296	121,135	3.3	2.4
Caloundra (C)	1,094	69,964	78,879	82,905	5.1	3.5
Esk (S)	3,934	14,287	14,884	15,050	1.1	1.0
Gatton (S)	1,572	15,212	16,066	16,147	0.5	1.2
Gold Coast (C)	1,407	381,367	439,374	455,473	3.7	3.6
Ipswich (C)	1,203	124,687	129,108	131,747	2.0	1.1
Kilcoy (S)	1,445	3,246	3,399	3,419	0.6	1.0
Laidley (S)	701	12,793	13,123	13,185	0.5	0.6
Logan (C)	251	164,821	169,608	171,292	1.0	0.8
Maroochy (S)	1,163	116,057	131,530	136,461	3.7	3.3
Noosa (S)	869	39,578	45,260	46,461	2.7	3.3
Pine Rivers (S)	750	112,356	127,570	133,778	4.9	3.6
Redcliffe (C)	39	49,123	50,770	51,723	1.9	1.0
<b>Redland (S)</b>	<b>537</b>	<b>107,697</b>	<b>120,494</b>	<b>124,683</b>	<b>3.5</b>	<b>3.0</b>
South East Qld	22,296	2,227,805	2,439,145	2,507,887	2.8	2.4
Queensland	1,734,157	3,447,725	3,710,972	3,796,775	2.3	1.9
Redland Shire as a percentage of Qld	0.03	3.1	3.2	3.3	..	..

S = Shire C = City  
p = preliminary estimates

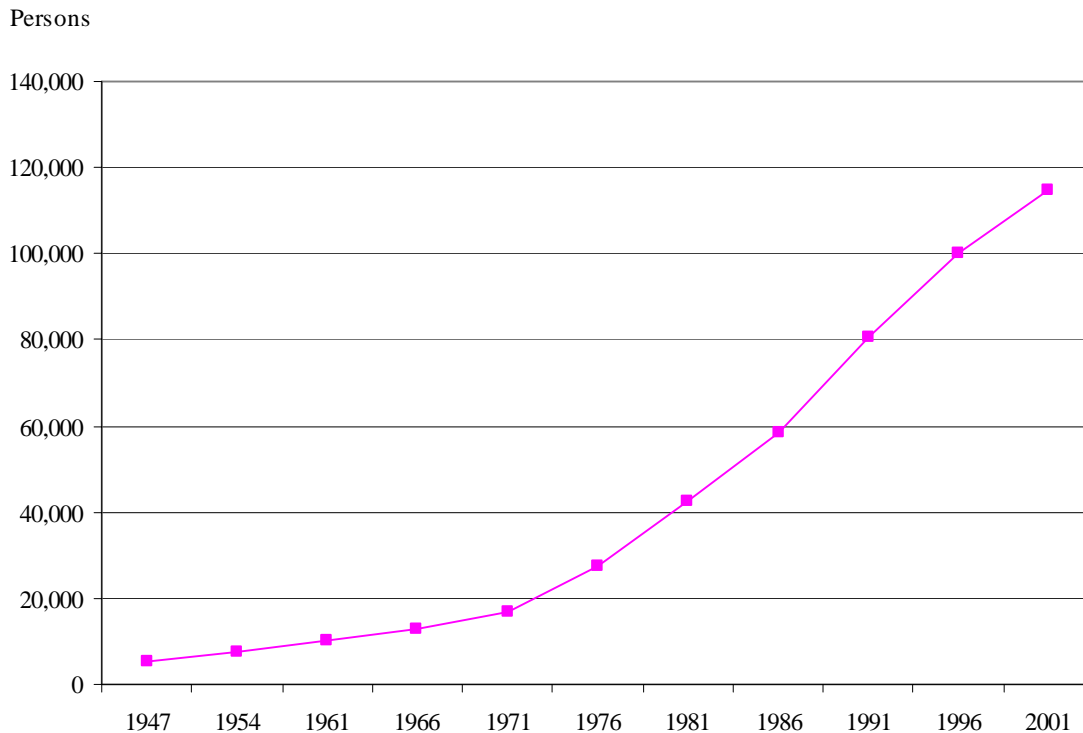
Source: Regional Population Growth, Australia and New Zealand, 2002-2003 (ABS Cat. no. 3218.0)



## Population change in Redland Shire since 1947

Census data indicate that the population of Redland Shire has increased greatly since the early 1970s (Figure 1). The population increased seven-fold between 1971 and 2001 from 16,672 persons to 114,601 persons.

**Figure 1. Population(a), Redland Shire, 1947 to 2001**



(a) Based on actual location census counts of the population.  
Source: Australian Bureau of Statistics, Censuses of Population and Housing, 1947 to 2001.

## Future trends

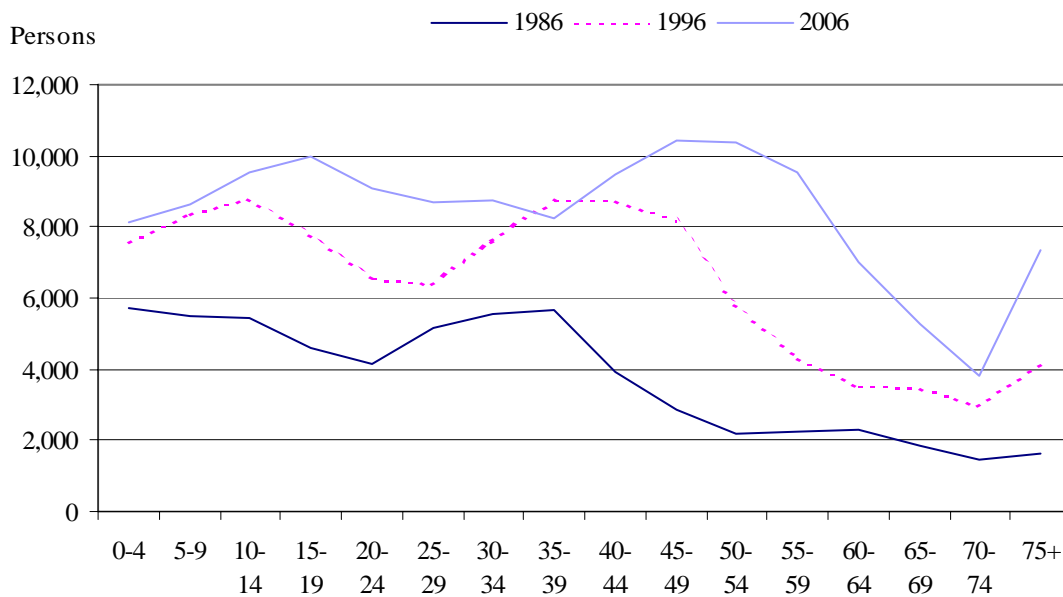
The latest Department of Communication and Information, Local Government and Planning medium level population projections indicate that the population of Redland Shire will increase at an average annual rate of 2.0 per cent during the twenty year period to 2021. This is a lower rate of increase than that recorded between June 1997 and June 2002 (2.7 per cent) but is greater than the projected average annual growth rate for Queensland as a whole (1.6 per cent). The estimated resident population is projected to increase from 114,601 persons in 2001 to 176,495 persons in 2021.



## PAST, PRESENT AND PROJECTED AGE PROFILES FOR REDLAND SHIRE

In the twenty-year period to 2006, the population of Redland Shire is projected to increase across all age groups (Figure 2). However, these increases are not uniform over the entire time period. Between 1986 and 1996, increases were recorded across all age groups. However, between 1996 and 2006, it is projected that most growth will occur in the 15 to 29 years age groups and for persons aged 45 years and over. In contrast, the number of persons aged 0 to 14 years is projected to increase only marginally, and the number of persons aged 35 to 39 years is projected to decrease over this time.

**Figure 2. Estimated resident population by age group, Redland Shire, 1986 to 2006(a)**



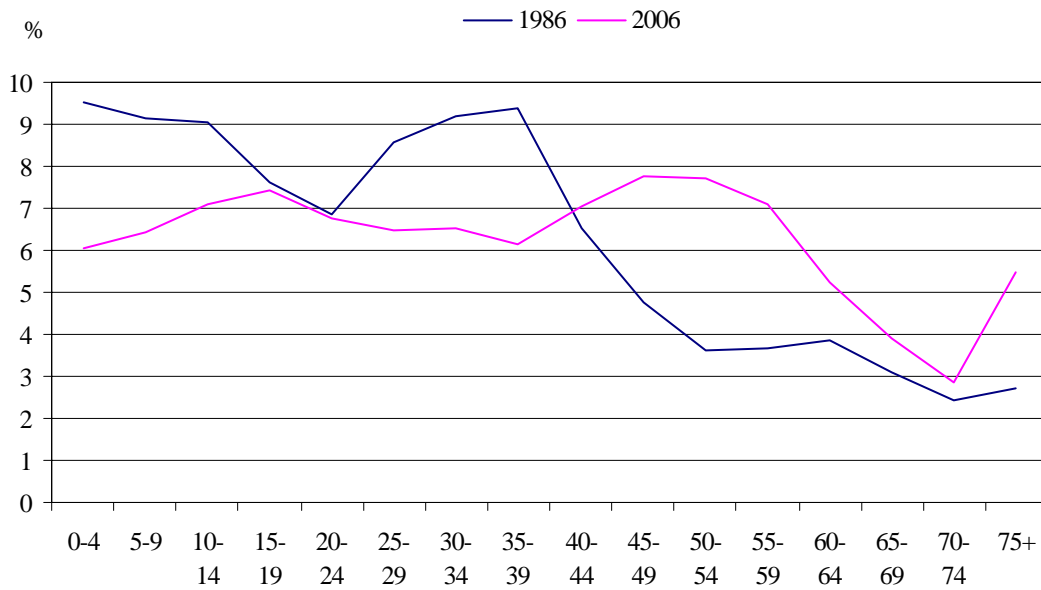
(a) Based on the medium projection series.

Source: Australian Bureau of Statistics, unpublished data; Department of Communication and Information, Local Government and Planning, *Population Projections for Queensland*, 1998 edition.

The uneven nature of the increases across age groups is expected to produce a very different age profile in Redland Shire in 2006 compared with 1986 (Figure 3). The projected age profile in 2006 is much older than that which existed in 1986. Also, in 1986, the age profile reflected a high proportion of families with children. By 2006, the projected age profile reflects a growing number of persons aged 45 years and over. Proportionally, the largest age groups have changed from 0 to 4 years and 35 to 39 years to 45 to 49 years and 50 to 54 years of age.



**Figure 3. Estimated resident population by proportion and age group, Redland Shire, 1986 and 2006(a)**

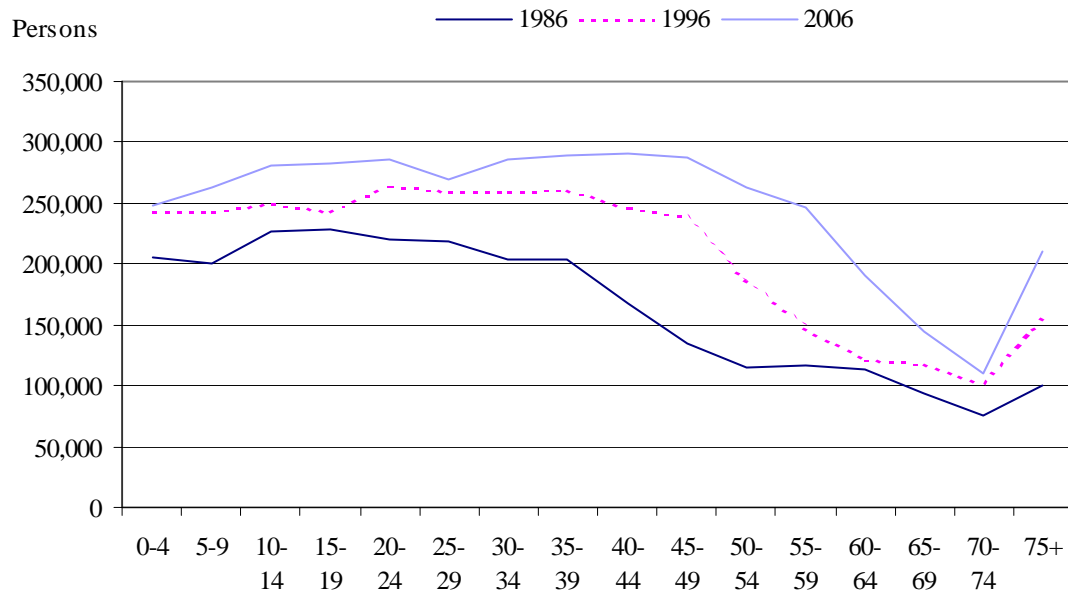


(a) Based on the medium projection series.

Source: Australian Bureau of Statistics, unpublished data; Department of Communication and Information, Local Government and Planning, *Population Projections for Queensland*, 1998 edition.

The population of Queensland is also projected to increase between 1986 and 2006 across all age groups (Figure 4).

**Figure 4. Estimated resident population by age group, Queensland, 1986 to 2006(a)**



(a) Based on the medium projection series.

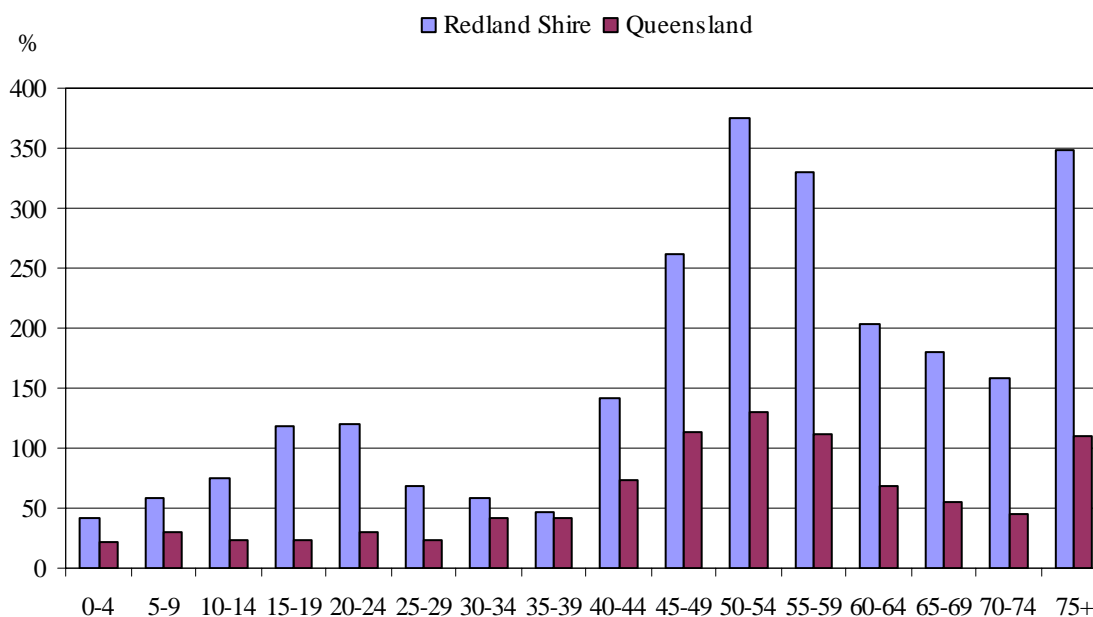
Source: Australian Bureau of Statistics, unpublished data; Department of Communication and Information, Local Government and Planning, *Population Projections for Queensland*, 1998 edition.



While the populations of Redland Shire and Queensland are both projected to increase between 1986 and 2006, there is one important difference. In Redland Shire, the percentage increases in the number of persons across all age groups are much larger (Figure 5).

In Queensland, the number of persons aged 45 to 59 years, and 75 years and over, are projected to more than double between 1986 and 2006. In Redland Shire, the number of persons aged 45 to 64 years and 75 years and over are projected to increase more than threefold during the same time period.

**Figure 5. Projected percentage change in estimated resident population by age group, Redland Shire and Queensland, 1986 to 2006(a)**



(a) Based on the medium projection series.  
 Source: Australian Bureau of Statistics, unpublished data; Department of Communication and Information, Local Government and Planning, *Population Projections for Queensland*, 1998 edition.



# LABOUR FORCE

## SUMMARY OF KEY DATA

Labour force data for December quarter 2003 show that the unemployment rate for Redland Shire was 5.0 per cent, lower than that for Queensland (5.8 per cent) and lower than that recorded for the corresponding period last year.

However, the unemployment rate for Redland Shire at the time of the 2001 Census was 7.0 per cent, lower than that for Queensland as a whole (8.2 per cent). Within South East Queensland, only Pine Rivers Shire (5.8 per cent) and Boonah Shire (4.2 per cent) had lower unemployment rates.

At the 2001 Census, *Retail Trade* was the largest industry in Redland Shire, with 16.5 per cent (8,547 persons) of the shire's employed labour force, followed by *Manufacturing* (6,682 persons) with 12.9 per cent. These proportions were both higher than those recorded for Queensland. In Queensland, the *Retail Trade* and *Manufacturing* industries employed 15.3 per cent and 10.7 per cent of employed persons respectively.

It should be noted that of those employed in the *Retail Trade* industry, 4,506 persons live and work within the Redland Shire, while a further 1,184 persons live outside Redland Shire and work locally. Similarly in the *Manufacturing* industry, 1,895 persons live and work within the Redland Shire, while a further 712 persons live outside Redland Shire and work locally.

In Redland Shire, the only industry to record a decline in the number of persons employed between 1991 and 2001 was the *Agriculture, Forestry and Fishing* industry. The number of employed persons fell from 829 to 796.

Total employment in Redland Shire increased by 18,026 persons over the ten-year period from 1991 to 2001. There were 3,390 jobs created in the *Retail Trade* industry, 2,597 jobs created in the *Property and Business Services* industry, and 2,441 jobs created in the *Health and Community Services* industry.



## SMALL AREA LABOUR FORCE DATA

### Current Unemployment

The unemployment rate in Redland Shire in the December quarter 2003 was 5.0 per cent (Table 2). This was lower than that recorded for Queensland (5.8 per cent) and lower than that recorded for the corresponding period last year.

Of Queensland's total labour force, 3.4 per cent (67,552 persons) were located in Redland Shire.

**Table 2. Labour force status (a), Redland Shire and Queensland, December quarter 2003**

	Redland Shire	Queensland	Redland Shire as a percentage of Queensland
Unemployment (number)	3,409	113,900	3.0
Unemployment rate (per cent)	5.0	5.8	..
Labour force (number)	67,552	1,977,300	3.4

(a) Original unadjusted series

Source: Department of Employment, Workplace Relations and Small Business; Small Area Labour Markets



## LABOUR FORCE – 2001 CENSUS

The overall unemployment rate for Redland Shire at the time of the 2001 Census was 7.0 per cent, lower than that for Queensland as a whole (8.2 per cent) (Table 3). Within South East Queensland, only Pine Rivers Shire (5.8 per cent) and Boonah Shire (4.2 per cent) had lower unemployment rates. While Brisbane City, Gatton Shire and Beaudesert Shire recorded the same unemployment rate.

The participation rate for the shire was 65.0 per cent, a rate that was 1.9 percentage points higher than that for Queensland (63.1 per cent). Only Pine Rivers Shire (71.9 per cent), Beaudesert Shire (66.9 per cent), Logan City (66.9 per cent) and Brisbane City (66.0 per cent) had higher participation rates.

**Table 3. Labour force status(a) by local government area, South East Queensland, 2001**

Local government area	Employed			Unemployed - persons -	Labour force	Not in		Participation rate (c) per cent
	Full-time	Part-time	Total (b)			Labour force	Unemploy-ment rate per cent	
Beaudesert (S)	15,481	7,437	23,805	1,794	25,599	12,669	7.0	66.9
Boonah (S)	2,261	1,033	3,397	149	3,546	2,473	4.2	58.9
Brisbane (C)	276,259	135,644	422,883	32,066	454,949	234,821	7.0	66.0
Caboolture (S)	25,380	14,526	41,434	5,065	46,499	35,404	10.9	56.8
Caloundra (C)	15,188	10,842	26,909	3,469	30,378	27,166	11.4	52.8
Esk (S)	3,329	1,621	5,138	496	5,634	4,633	8.8	54.9
Gatton (S)	4,058	2,095	6,376	481	6,857	4,062	7.0	62.8
Gold Coast (C)	108,778	64,644	179,122	19,269	198,391	126,363	9.7	61.1
Ipswich (C)	33,561	15,953	51,141	4,715	55,856	33,516	8.4	62.5
Kilcoy (S)	767	434	1,243	104	1,347	1,008	7.7	57.2
Laidley (S)	2,898	1,436	4,516	514	5,030	3,963	10.2	55.9
Logan (C)	46,633	22,260	71,223	8,006	79,229	39,243	10.1	66.9
Maroochy (S)	28,266	19,998	49,767	6,290	56,057	40,847	11.2	57.8
Noosa (S)	9,425	7,406	17,351	2,176	19,527	15,407	11.1	55.9
Pine Rivers (S)	38,028	19,188	58,844	3,618	62,462	24,459	5.8	71.9
Redcliffe (C)	11,302	6,327	18,248	2,241	20,489	17,937	10.9	53.3
<b>Redland (S)</b>	<b>32,911</b>	<b>17,351</b>	<b>51,807</b>	<b>3,911</b>	<b>55,718</b>	<b>30,045</b>	<b>7.0</b>	<b>65.0</b>
Queensland	1,002,596	518,158	1,568,864	140,748	1,709,612	1,000,121	8.2	63.1
Redland Shire as a percentage of Queensland	3.3	3.3	3.3	2.8	3.3	3.0	..	..

S = Shire C = City

(a) Persons aged 15 years and over.

(b) Includes not stated.

(c) Only those persons who stated their labour force status were included in the calculation. Excludes overseas visitors.

Source: Australian Bureau of Statistics, 2001 Census of Population and Housing, unpublished data.



## EMPLOYMENT BY INDUSTRY – 2001 CENSUS

At the 2001 Census, *Retail Trade* was the largest industry in Redland Shire with 8,547 (16.5 per cent) of the region's employed labour force, followed by *Manufacturing* (6,682 or 12.9 per cent) (Table 4). This compared with 15.3 per cent and 10.7 per cent respectively for the State as a whole for these industries.

Specialisation in the shire occurred in the following industries: *Manufacturing, Construction, Wholesale Trade, Retail Trade, Transport and Storage, Communication Services, Finance and Insurance, and Personal and Business Services.*

**Table 4. Employment by industry(a), Redland Shire and Queensland, 2001**

Industry	Redland Shire		Queensland		Specialisation ratio (a)
	number	per cent	number	per cent	
Agriculture, Forestry and Fishing	796	1.5	76,532	4.9	0.3
Mining	344	0.7	19,286	1.2	0.5
Manufacturing	6,682	12.9	167,380	10.7	1.2
Electricity, Gas and Water Supply	346	0.7	12,359	0.8	0.8
Construction	4,548	8.8	111,209	7.1	1.2
Wholesale Trade	3,477	6.7	79,718	5.1	1.3
Retail Trade	8,547	16.5	239,615	15.3	1.1
Accommodation, Cafes and Restaurants	1,891	3.7	88,381	5.6	0.6
Transport and Storage	2,844	5.5	77,587	4.9	1.1
Communication Services	1,001	1.9	23,016	1.5	1.3
Finance and Insurance	1,724	3.3	44,562	2.8	1.2
Property and Business Services	5,268	10.2	153,864	9.8	1.0
Government Administration and Defence	1,959	3.8	75,048	4.8	0.8
Education	3,347	6.5	118,896	7.6	0.9
Health and Community Services	4,825	9.3	151,029	9.6	1.0
Cultural and Recreational Services	937	1.8	37,341	2.4	0.8
Personal and Other Services	2,180	4.2	57,662	3.7	1.1
Non-classifiable economic units	273	0.5	7,452	0.5	1.1
Not stated	819	1.6	27,927	1.8	0.9
<b>Total</b>	<b>51,808</b>	<b>100.0</b>	<b>1,568,864</b>	<b>100.0</b>	<b>1.0</b>

(a) Ratio of per cent for the Redland Shire to per cent for Queensland.

Source: Australian Bureau of Statistics, 2001 Census of Population and Housing, unpublished data.

It should be noted that of those employed persons, not all work within Redland Shire. Labour demand within Redland Shire indicates that 20,111 persons live and work within Redland Shire while a further 6,090 live outside Redland Shire while working in the shire.

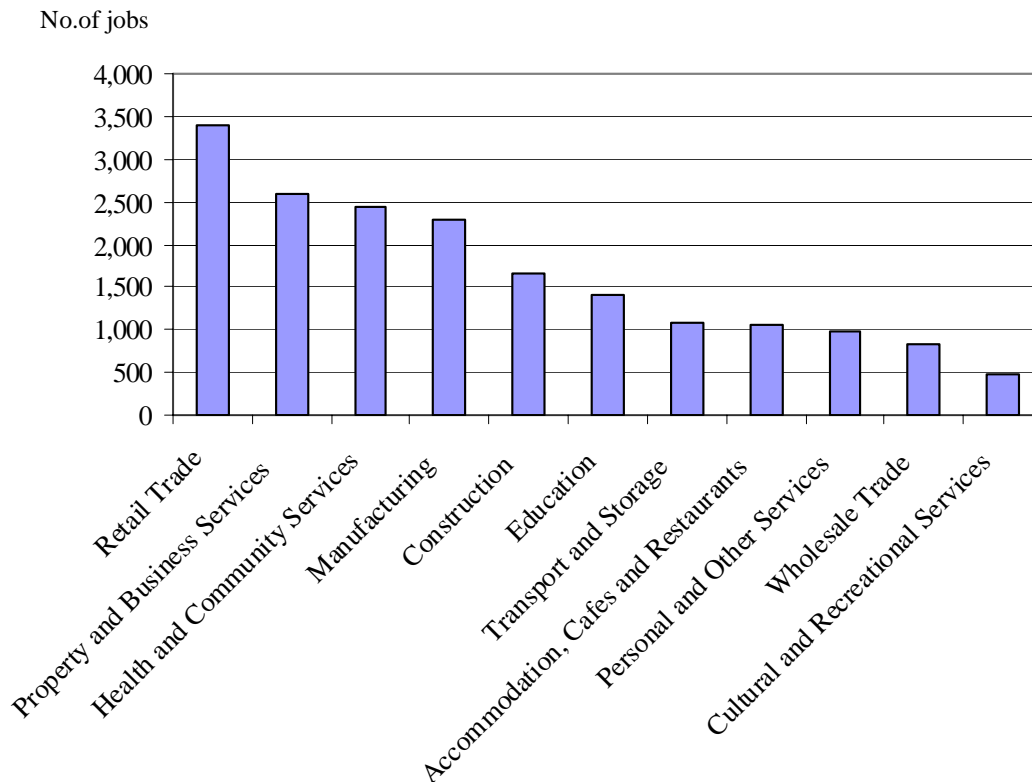
Demand for labour within Redland Shire reveals that the *Retail Trade* industry is the largest employer (5,690 persons or 21.7 per cent of the total demand for labour) followed by *Health and Community Services* is next largest employer within the shire employing 2,839 persons or 10.8 per cent of the total demand for labour.



## EMPLOYMENT BY INDUSTRY – CHANGES SINCE 1991

Total employment in Redland Shire increased by 18,026 persons over the ten-year period from 1991 to 2001. There were 3,390 jobs created in the *Retail Trade* industry, 2,597 jobs created in the *Property and Business Services* industry, 2,441 jobs created in the *Health and Community Services* industry, and 2,280 jobs created in the *Manufacturing* industry (Figure 6).

**Figure 6. Change in number of jobs by selected industry, Redland Shire, 1991 to 2001**



Source: Australian Bureau of Statistics, 1991 and 2001 Censuses of Population and Housing, unpublished data.



# BUSINESS DEVELOPMENT

## SUMMARY OF KEY DATA

The value of agricultural production in Redland Shire for the year ended March 2001 was \$60.7 million, representing 0.8 per cent of the Queensland total.

Based on data for the year ended 31 December 2003, in Redland Shire, there were 1,478 new houses and other residential buildings approved with a total value of \$270.7 million, and non-residential buildings approved with a total value of \$50.6 million. The significant value of these residential approvals follows the strong growth recorded in the previous year.

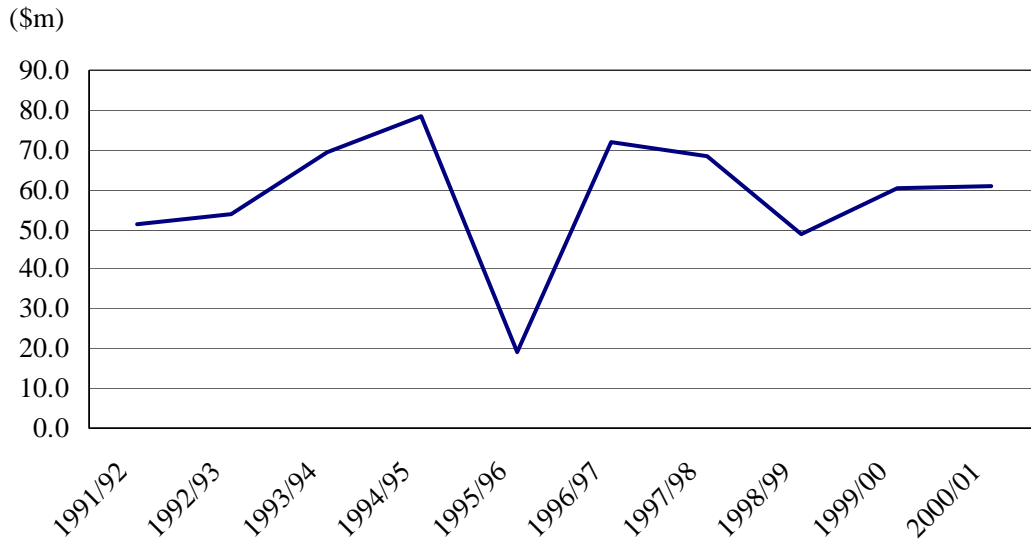
Takings from tourist accommodation in Redland Shire for the year ended September 2003 were \$2.1 million, accounting for 0.2 per cent of Queensland's takings from accommodation.



## AGRICULTURAL PRODUCTION

Figure 7 shows that the total gross value of agricultural production in Redland Shire for the year ended March 2001 was \$60.7 million. Over the ten year period 1991/92 to 2000/01 the gross value of agricultural production increased by \$9.6 million or 18.7 per cent.

**Figure 7. Gross value of agricultural production: Redland Shire, 1991/92 to 2000/01**



Source: Australian Bureau of Statistics, Agricultural Commodity Survey, unpublished data.



## BUILDING INVESTMENT IN REDLAND SHIRE

Based on data for the year ended 31 December 2003, there were 1,478 new houses and other residential buildings approved in Redland Shire with a total value of \$270.7 million (Table 5). These approvals accounted for 3.5 per cent of the number (42,238) and 3.5 per cent of the value (\$7,835.9 million) of Queensland's new residential dwelling approvals.

Only Brisbane City, Gold Coast City, Maroochy Shire, Caboolture Shire, Pine Rivers Shire and Caloundra City accounted for a higher value of new house and other residential building approvals.

The total value of non-residential buildings approved in the shire for the year ended 31 December 2003 was \$50.6 million, 1.7 per cent of the overall total for Queensland.

**Table 5. Building approvals (a), South East Queensland, year ended 31 December 2003**

(a) I Local government area	Dwelling units in new residential buildings number	Value of dwelling units in new residential buildings	Value of non- residential buildings approved - \$'000s -	Total value of buildings approved
Beaudesert (S)	717	116,120	8,855	124,975
Boonah (S)	32	4,994	3,359	8,353
Brisbane (C)	9,669	2,051,423	1,407,816	3,459,239
Caboolture (S)	2,247	325,110	50,915	376,026
Caloundra (C)	1,648	292,178	39,237	331,415
Esk (S)	104	15,531	219	15,750
Gatton (S)	87	12,132	3,036	15,168
Gold Coast (C)	7,407	1,591,209	438,577	2,029,787
Ipswich (C)	1,668	249,389	43,152	292,541
Kilcoy (S)	32	5,099	190	5,289
Laidley (S)	109	14,416	3,999	18,416
Logan (C)	1,027	158,602	96,476	255,078
Maroochy (S)	2,589	511,891	170,458	682,349
Noosa (S)	674	164,499	43,031	207,529
Pine Rivers (S)	1,967	303,414	59,617	363,031
Redcliffe (C)	434	79,820	18,493	98,313
<b>Redland (S)</b>	<b>1,478</b>	<b>270,734</b>	<b>50,567</b>	<b>321,301</b>
Queensland	42,238	7,835,910	3,035,642	10,871,552
Redland Shire as a percentage of Qld	3.5	3.5	1.7	3.0

S = Shire C = City

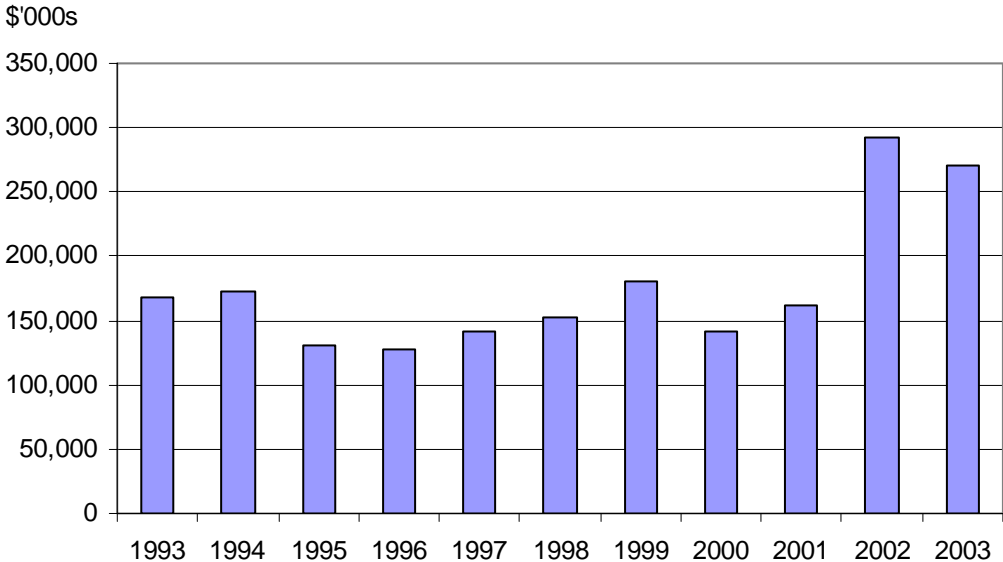
(a) Includes alterations and additions to residential buildings.

Source: Australian Bureau of Statistics, Building Approvals, Queensland (Cat. no. 8731.3)



The significant value of residential building approvals in Redland Shire recorded for 2003 (Figure 8) follows the strong growth of 2002, which recorded Redland Shire's highest residential building approval values for ten years.

**Figure 8. Value of residential building approvals, Redland Shire, 1993 to 2003**



Source: Australian Bureau of Statistics, *Building Approvals, Queensland* (Cat. no. 8731.3).



## MEAN TAXABLE INCOME

Statistics from the Australian Taxation Office show that the mean taxable income of taxpayers in Redland Shire for the 1999-00 financial year was \$33,948. This figure was \$752 more than the equivalent Queensland figure (\$33,196).

**Table 6. Mean taxable income of taxpayers, Redland Shire and Queensland, 1999-00**

	Redland Shire	Queensland
Taxable persons	50,796	1,540,507
Taxable income (\$millions)	1,724.4	51,138.0
Mean taxable income (\$)	33,948	33,196

Source: Australian Taxation Office (unpublished data).



## TOURIST ACCOMMODATION

Redland Shire forms part of the Brisbane Tourism Region in Queensland. Table 7 shows that in September quarter 2003, the shire had 5 (0.5 per cent) of Queensland's tourism establishments and 137 (0.3 per cent) of Queensland's hotel, motel, resort, guest house and serviced apartment rooms.

Takings from tourist accommodation for Redland Shire for the year ended 30 September 2003 were \$2.1 million, accounting for 0.2 per cent of Queensland's takings from accommodation during this year.

The average occupancy rate for guest rooms in Redland Shire was 49.8 per cent for September quarter 2003, 19.5 percentage points below the rate for Queensland (69.3 per cent). It should be recognised, however, that room occupancy rates vary considerably depending on the time of the year (Figure 9).

**Table 7. Tourist accommodation by selected local government areas, Brisbane Tourism Region, September 2003**

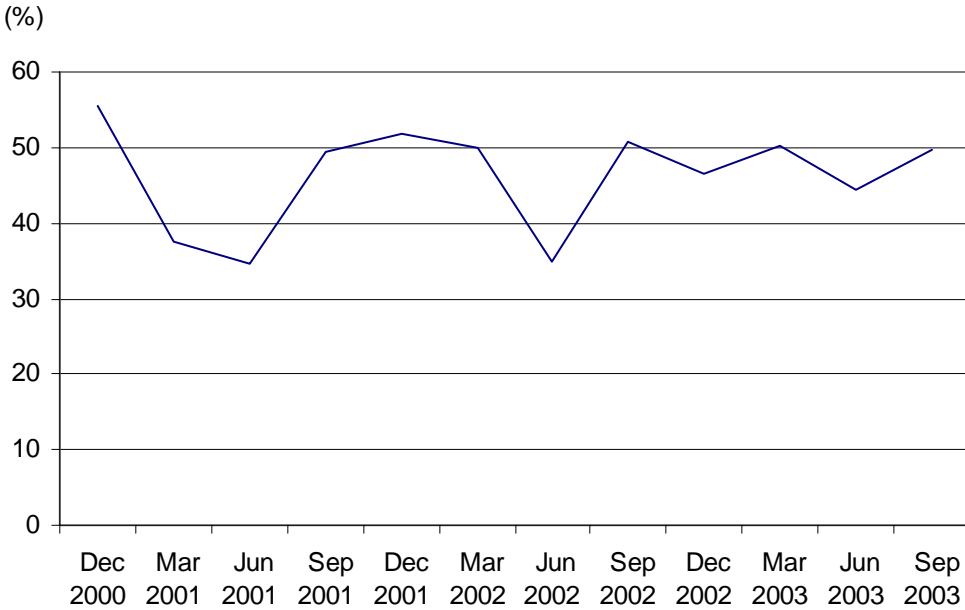
Tourism region/ local government area	September quarter 2003			Takings from accommodation (Yr to September 2003) \$'000
	Establishments — number —	Guest rooms	Average room occupancy rate per cent	
<b>Brisbane Tourism Region</b>				
Brisbane (C)	132	9,005	78	246,941
Caboolture (S)	7	193	48.3	2,333
Ipswich (C)	5	136	72.2	2,651
Logan (C)	5	122	54.8	1,541
<b>Redland (S)</b>	<b>5</b>	<b>137</b>	<b>49.8</b>	<b>2,080</b>
Balance	6	142	54.1	2,219
 Queensland	 1,010	 54,767	 69.3	 1,383,171
 Redland Shire as a percentage of Queensland	 0.5	 0.3	 ..	 0.2

C = City S = Shire

Source: Australian Bureau of Statistics, *Tourist Accommodation, Queensland* (Cat. no. 8635.3).



**Figure 9. Average room occupancy rates, Redland Shire, December 2000 to September 2003**



Source: Australian Bureau of Statistics, *Tourist Accommodation, Queensland* (Cat. no. 8635.3).

